

## MFPA Summer Meeting Education Sessions: Something For Everyone!

We are excited to finalize the 2018 Education sessions that will be presented on Saturday July 21, 2018 at Old Kinderhook at The Lake of the Ozarks. State Auditor Nicole Galloway will address our group and present information on her strategy to monitor state agency business practices. To my knowledge, an acting State Auditor has not addressed MFPA before and we believe Ms. Galloway's presentation will be very interesting.

Mr. Jason Metnick, Senior Vice President for Customer Affairs for the Sustainable Forestry Initiative (SFI) in Washington, D.C. will address MFPA regarding SFI's objectives and their interest in expanding their reach in the hardwood industry. The Missouri Department of Conservation (MDC) has certified the majority of their forest land through SFI creating a starting point for SFI to potentially be utilized in Missouri. SFI has over 285 million acres certified in North America and they are actively trying to expand that number, particularly in hardwood regions.



Nicole Galloway

White oak mortality in Missouri, well beyond natural expectations, is becoming more and more concerning. The issue has drawn the attention of industry, universities, and government agencies, all of which are concerned about the long term health and sustainability of this important species. Dr. Steve Shifley, Research Forester, Northern Research Station, Columbia MO will present recent data regarding white oak mortality and will reflect on the severity of the issue and management implications.

Log exporting in the forest products industry is a major topic of conversation, regardless of whether you are in favor or against. Data suggests that log exporting (of most species) has drastically increased in 2017 and all signs indicate that the trend will continue in 2018. Mr. Michael Snow, Executive Director of the American Hardwood Export Council (AHEC) will present information on a new project that AHEC is launching to investigate log exports specific to China. The majority of the increase in exporting is a result of China's huge appetite for logs. We need to gather a lot more information regarding the reasons for such a strong surge in log exporting and this project is a good first step.



Jason Smith

These four presentations, along with a major presentation by the Missouri Department of Agriculture's administrative team and a visit from U.S. Congressman Jason Smith will round out a great education session that will hopefully pique the interest of our members.

See you at the Summer Meeting!!

## In this issue.....

page 1

- MFPA Summer Meeting Education Sessions: Something For Everyone!

page 2

- 2018 Environmental Conference

page 3

- MLC Area Meeting - Bolivar

page 4

- Summer Meeting Associate Member Exhibition Registration

page 5

- Summer Meeting Sponsor Opportunities

page 6

- Certification & Education

page 7

- MFPA Logging School Update

## Our Mission

Missouri Forest Products Association is dedicated to serving and promoting the forest products industry of Missouri. Founded in 1970, MFPA has over 300 members representing primary and secondary wood industry, supplier and service industries, loggers and landowners. MFPA advocates sustainable management and sound stewardship of Missouri's forests to benefit current and future generations.

### Officers

Jeff Anderson, Independent Stave Company, Inc.  
President

Kevin Conner, C & K Lumber LLC  
Past President

Jennifer Blum, Botkin Lumber Company, Inc.  
Vice President

Paul Gaines, Madison County Wood Products, Inc.  
Secretary-Treasurer

### Staff

Brian Brookshire, Executive Director  
Beverly Heidbreder, Accountant

Mark McCarthy, Certification and Education Manager

Laura Brookshire, Communications and Membership Manager

Fred Smith, Logging School Manager

## 2018 Environmental Conference May 17-18, 2018 Springfield, Missouri

The Environmental Conference is focused on industry, manufacturing, and other regulated entities. Industry, private business partners, and local, state and federal regulators are coming together to provide an informative and actionable experience. Get timely insights and perspectives so you're equipped to comply with current and coming regulations and policies.

Click the web address below for the conference website and registration link:  
[www.TheEnvironmentalConference.com](http://www.TheEnvironmentalConference.com)

Please contact MFPA Associate Member Environmental Works with questions and for more information, [tbieker@environmentalworks.com](mailto:tbieker@environmentalworks.com) or (417) 890-9500.

## If You Want Something Insured Right Insure It Yourself

### MISSOURI WOOD INDUSTRY INSURANCE TRUST

offers workers compensation insurance designed for Missouri's forest products industries.

AT MWIIT, WE . . .

- fight fraudulent claims
- provide specialized loss prevention services
- have claims adjusters who listen
- provide insurance at cost

*For further information or quotations, call our toll free number*

**800-821-7703**

Endorsed by



### Missouri Wood Industry Insurance Trust

c/o Haas & Wilkerson

4300 Shawnee Mission Pkwy, Fairway, KS 66205  
Phone (913) 432-4400 Fax (913) 432-6159





# MLC Area Meeting Bolivar

The Missouri Logging Council invites you to join us with our friends around Bolivar for an Area Meeting. Supper will be provided. MLC events, updates and issues will be discussed. ALL LOGGERS are invited to attend this meeting. Not a MLC member? This would be a great place to sign up and participate! Bring a friend!!

When: Thursday, April 19, 2018 5:30 pm  
Where: MDC Bolivar Office  
412 Killingsworth Ave  
Bolivar, MO 65613

Please RSVP to mark@moforest.org or call 573-634-3252 so we can get a count for food.



573-747-0190

2880 US 67

Farmington, MO 63640

Call or Visit Us Today!



- Loader Equipped Log Trucks
- Logging Road Tractors
- Truck Parts for All Makes
- Trucking Supplies

- Skidder Chains
- Mainlines and Chokers
- Hydraulic Oils
- Bar and Chain Oil

# ***2018 SUMMER MEETING*** ***MFPA Associate Members*** ***Exhibition***

Calling all MFPA Associate Members, join us at the Summer Meeting July 20-22nd and participate in the annual MFPA Associate Members Exhibition!! MFPA is preparing this event to be held during the Summer Meeting that will benefit all members. During the Welcome Reception and BBQ, exhibit booths will be available for Associate Members to display and promote their services to fellow Industry and Logging Members who may utilize their services and equipment.

## **MFPA Associate Members Exhibit Registration** **Friday, July 20<sup>th</sup>**

Each exhibit booth includes a 30"x6' table and two chairs

Exhibit fees: \$75.00

Exhibitor set up: Friday 4:00pm

Exhibit times: Friday 5:30pm - 9:30pm

Company Name: \_\_\_\_\_

Contact Name: \_\_\_\_\_

### **Payment Method:**

Check payable to Missouri Forest Products Association

Credit Card     Mastercard     Visa

Card Number \_\_\_\_\_

Exp Date \_\_\_\_\_    Zip Code \_\_\_\_\_

Name on Card \_\_\_\_\_

### **Please return this form to:**

Missouri Forest Products Association

505 East State Street

Jefferson City, MO 65101

or fax to: 573-636-2591

or email to: [Laura@moforest.org](mailto:Laura@moforest.org)

Questions? Call 573-634-3252

# SUMMER MEETING SPONSOR OPPORTUNITIES

Support your association by sponsoring a meeting or event at the  
2018 Summer Meeting

*(Get your sponsorships in early to be recognized in the registration brochure)*

## FRIDAY

---

### Committee Meeting Refreshments

Forest Health	___ \$200
Education & Technical Services	___ \$200
Governmental Affairs	___ \$200
MFP PAC	___ \$200

Board of Directors Meeting Refreshments \_\_\_ \$200  
3 Co-Sponsors \$200 each

Welcome Reception Exclusive Sponsor \_\_\_ \$1500  
Or 3 Co-Sponsors \$500 each \_\_\_ \$500

## SATURDAY

---

Missouri Logging Council Board and General Membership Meeting \_\_\_ \$200  
3 Co-Sponsors \$200 each

Membership Continental Breakfast \_\_\_ \$300  
3 Co-Sponsors \$300 each

General Session Exclusive Sponsor \_\_\_ \$1200  
Or 6 Co-Sponsors \$200 each \_\_\_ \$200

General Session Breaks \_\_\_ \$250  
2 Co-Sponsors \$250 each

Membership Luncheon Exclusive Sponsor \_\_\_ \$1500  
Or 5 Co-Sponsors \$300 each \_\_\_ \$300

Log A Load for Kids Golf Tournament Look for listing in the May Newsletter

Dinner Exclusive Sponsor (dinner only, not entertainment) \_\_\_ \$1200  
Or 3 Co-sponsors \$400 each \_\_\_ \$400

NAME: \_\_\_\_\_ COMPANY: \_\_\_\_\_

Return form to MFPA by mail: 505 East State Street, Jefferson City, MO 65101

Fax: 573-636-2591

email: [laura@moforest.org](mailto:laura@moforest.org)

call: 573-634-3252

***THANK YOU FOR YOUR SUPPORT!***



# CERTIFICATION & EDUCATION



Mark McCarthy

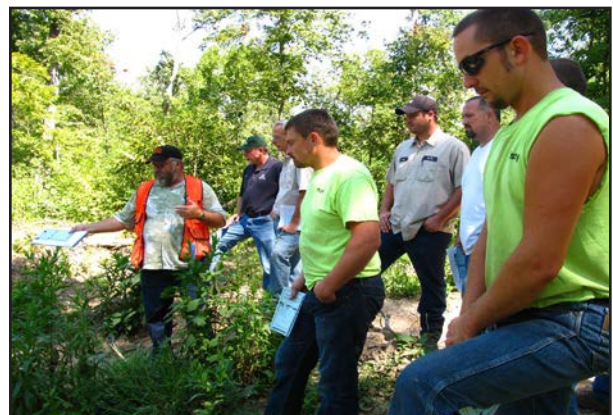


Each year, more than 36,000 people are treated in emergency departments for chainsaw injuries, even more for accidents in sawmills. Most accidents occur because the operator is either inexperienced and therefore not using the tool correctly, or in the case of a chainsaw, he simply cannot handle the saw because it is above his skill level. Poor judgment also contributes to accidents. Many chainsaw users fail to wear the required personal protective equipment (PPE) such as leg chaps that are designed to protect the legs. Other PPE include hard hats, and both ear and eye protection. According to OSHA, chaps or chainsaw pants... as well as keeping both hands on the saw would reduce chainsaw injuries by 75 percent or more. Over the past 18 months, there has been an increase in the number of chainsaw accidents in the state. In an attempt to bring those numbers down, MFPA has created a new Safety Committee. It's the hope that by trying to understand the causes of the accidents while increasing the visibility of them, we may be able to make a difference. If you are involved in any kind of accident while working (not just chainsaws), and you are comfortable with giving the information so others can learn...let us use the information to help others. These kind of accident reports frequently run in some of the trade magazines. We will keep names and places out of the reports, but we can all learn so much more when the reports come from our area, rather than from other states. If you are interested, please contact me (573-634-3252 or [mark@moforest.org](mailto:mark@moforest.org)). The foundation of PTH training is safety. Maybe by highlighting OUR accidents, and learning from them, along with improving our training...we can start preventing accidents. It's time to do something to make the woods safer. It's time to do something to make our workplaces safer. Now is the time.

## Professional Timber Harvester 2018 Class Schedule

The five-day PTH training program offers four levels of chainsaw safety training and forest management. Session dates that are still have available openings are listed below. Register by calling MFPA, or online through our website: <http://www.moforest.org>.

Location	Level 1&2	Level 3&4	Forest Management
Doniphan	September 17-18	October 8-9	September 26
Mountain View	September 9-20	October 10-11	October 3



# MFPA LOGGING SCHOOL UPDATE



Fred Smith



The Spring/Summer 2018 Logging School session will begin on May 30th and the class is filling fast with High School Seniors. The Fall 2018 Logging School session will begin on September 5th with enrollment open for it as well. If you have someone or you know someone who wants to attend either of these sessions please have them complete their application as soon as possible. Applications are available for download or can be completed online at <http://moforest.org/logging-school/>

With Tax Day April 17th upon us again I wanted to share a way to help financially challenged students attend the MFPA Logging School through a charitable contribution to the Missouri Forest Foundation. The Missouri Forest Foundation is an IRS recognized 501c3 charitable organization. You may direct your contributions in several ways. The contribution can be directed to a specific student or a group of financially challenged students the choice is yours to make. If you would like to make a contribution please call the MFPA office at 573-634-3252. If you have any questions, recommendations or suggestions please contact me at 573-619-4494 or [fred@moforest.org](mailto:fred@moforest.org).

## Wick's – WESTERN STAR – TRUCKS

*2019 Western Star 4700SB Log Truck*  
*Arriving mid April!*

Call or  
email  
for full  
spec's  
or  
pricing



Member  
MFPA



DD13 505 HP w/1850 Torque/18 Speed Trans  
20,000 Frt/46,000 Drive/20,000 Tag

Full lockers, aluminum wheels, 125 gallon fuel, double frame  
Have Serco 8500 ready to mount.

**Bill Merial • 402-290-0728 • [bmerical@wickstrucks.com](mailto:bmerical@wickstrucks.com)**  
**10502 S. 147th St. Omaha, NE**

**\*\*Wick's Trucks is proud to donate \$1,000 to Log a Load for Kids for every new Western Star sold in any state to a logger, saw mill, pallet manufacturer!**



505 East State Street  
Jefferson City, MO 65101-3038

PRSR STD  
U.S. POSTAGE  
**PAID**  
Jefferson City, MO 65101  
Permit No.239

# Don't Cut CORNERS ON INSURING YOUR SUCCESS.

When it comes to choosing someone to help you insure your success, you want to be sure they don't leave you out on a limb when you need them.

Haas & Wilkerson is an independent insurance agency that specializes in insuring sawmills, pallet mills and all types of lumber and woodworking-related businesses.

*For further information or quotations, call our toll free number*

**800-821-7703**



**HAAS&WILKERSON**  
INSURANCE

4300 Shawnee Mission Pkwy  
Fairway, KS 66205

**INSURING YOUR SUCCESS**



**Naught-Naught  
Agency**



*For All  
Your  
Insurance  
Needs!*



**Commercial • Health  
Auto • Home • Life  
Financial Planning**

**Serving you from twelve  
Missouri locations.**

**[www.naught-naught.com](http://www.naught-naught.com)**